



DEPARTMENT OF CONSUMER AFFAIRS • BUREAU OF HOUSEHOLD GOODS AND SERVICES  
4244 South Market Court, Suite D, Sacramento, CA 95834  
P: (916) 999-2041 | F: (916) 921-7279 | Web: [bhgs.dca.ca.gov](http://bhgs.dca.ca.gov)



## **TECHNICAL BULLETIN 33**

### **Method of Measuring the Finished Size of Mattress Pads**

January 2025

## METHOD OF MEASURING THE FINISHED SIZE OF MATTRESS PADS

### SCOPE

Technical Information Bulletin Number 33 sets forth the method that must be used when measuring mattress pads. Use this method to determine if a mattress pad complies with the finished size stated on the official law label, hang tags, or advertising materials.

### EQUIPMENT

1. Flat surface
2. Steel tape measure
3. Scissors

### PROCEDURE

All measurements are made with a steel tape to the nearest 1/16 inch.

**NOTE:** Some mattress pads have elastic material to secure the mattress pad to the mattress. The attached elastic may distort the measured finished size if the mattress pad cannot be measured in its “relaxed state.” To ensure accurate measurements, remove (cut away) the elastic. Make a cut at **each corner** of the mattress pad to fully relax the article, making sure only to cut the sections **without any filling material**. (See **Figures 1, 2, and 3.**)

#### TO MEASURE LENGTH – Applies to All Sizes

1. Lay the mattress pad out in a relaxed state, without tension, on a flat surface. Pad is to be free of wrinkles or creases.
2. Take three measurements, one each on the outer edges and one in the center of the pad. Measurements are made from edge-to-edge in a line parallel to the selvage. Measure at the seam. (See **Figures 4 and 5.**)
3. Average the three measurements and report as length of the mattress pad in inches.
4. When corners are rounded, take measurements at a point immediately below the curvature. (See **Figures 6 and 7.**)

TO MEASURE WIDTH – Applies to All Sizes

1. Lay the mattress pad out in a relaxed state, without tension, on a flat surface. Pad is to be free of wrinkles or creases.
2. Take three measurements, one each on the outer edges and one in the center of the pad. Measurements are made from edge-to-edge in a line perpendicular to the selvages. (See **Figures 4 and 5.**)
3. Average the three measurements and report as the width of the mattress pad in inches.
4. When corners are rounded take measurements at a point immediately below the curvature. (See **Figures 6 and 7.**)

**Figure 1: Mattress Pad with Elastic – Pre-Cutting**



**Figure 2: Mattress Pad with Elastic – Two Corners Cut**



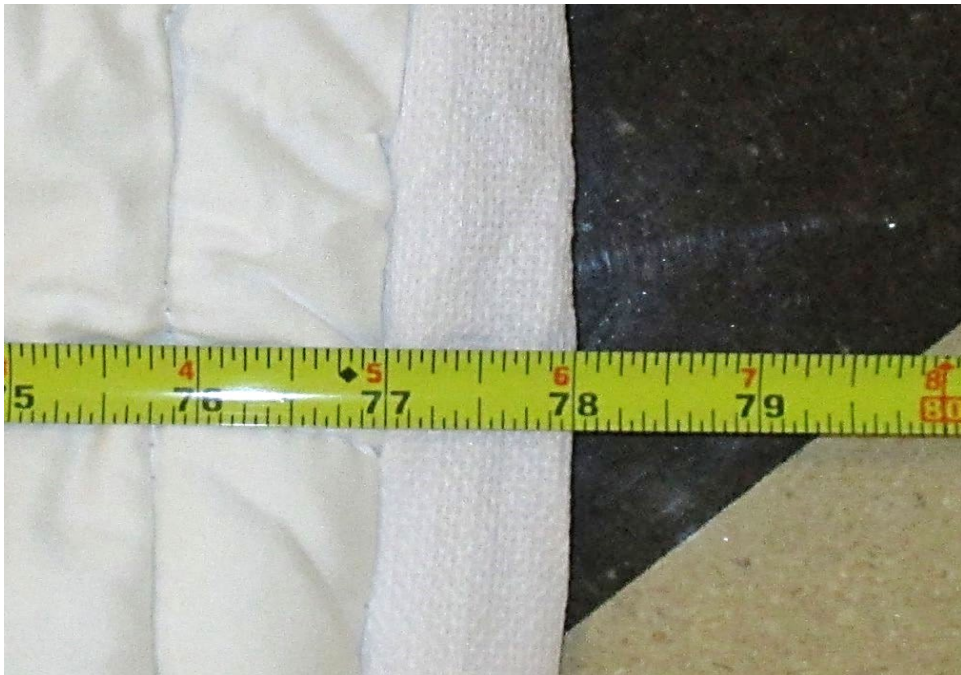
**Figure 3: Mattress Pad with Elastic – All Four Corners Cut**



**Figure 4: Mattress Pad**  
(CORRECT – Measurement begins at seam)



**Figure 5: Mattress Pad**  
(INCORRECT – DO NOT measure beyond seam)



**Figure 6: Mattress Pad**  
(CORRECT – measure below curvature)



**Figure 7: Mattress Pad**  
(INCORRECT – DO NOT measure at curvature)

